



**CRESTLINER®**  
FORGED WITH STRENGTH. DEFINED BY DURABILITY.



# ***FORGED WITH STRENGTH. DEFINED BY DURABILITY.***

For over seven decades, we've pushed the limits of possibility with every new Crestliner model. Through each passing year our craftsmen have shaped more than the toughest all-welded aluminum hulls on the water—they've shaped your time on the water. With a relentless commitment to excellence, Crestliner continues to push boundaries by building boats with unrivaled strength, innovative fishing features and superior design. Experience the strongest, most durable fishing boats on the water today.

2	Advantages
6	Sportfish
12	Super Hawk
18	Authority
20	Commander
22	Raptor
28	Fish Hawk
34	Pro Tiller
38	Vision
40	Discovery
42	Kodiak/CRV
44	Features & Options
48	Specs & Colors



# BUILT TO ENDURE

With thick, high-quality aluminum and all-welded strength, every Crestliner hull is ready to withstand the harshest of waters and the worst weather conditions.

## 1 LEGENDARY FOUR X HULL

This is where four pieces of aluminum interlock and are welded together to become one. This provides you the lightweight durability of aluminum and the seamless look of fiberglass.

## 2 INTERLOCKING TONGUE AND GROOVE CONSTRUCTION

Crestliner boats are built using an innovative interlocking tongue and groove seam construction method, creating a rock-solid bond and, once again, proving there isn't a boat designed with more precision or durability.

## 3 EXTRUDED FULL LENGTH KEEL

No other area is subjected to more punishment than the keel. Crestliner integrates the smooth extruded full-length keel from bow to stern, ensuring unbeatable strength and durability.

## WORK-HARDENED SIDE WALLS



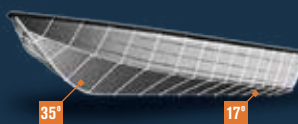
Through the process of work hardening, Crestliner delivers sidewalls that can perform through cross-waves and tough conditions better than smooth sidewalls. These bends not only add tremendous strength, but look great too.

## REVERSE CHINE



Reverse chine with integrated spray rail design forces water down and away for a drier ride.

## VARIABLE DEGREE DEADRISE



Variable degree deadrise allows for instant planing and unmatched stability.

\*Not all processes, features and statements apply to every Crestliner boat model.

## UNMATCHED STRUCTURAL INTEGRITY

Underneath the floor of a Crestliner is an intricate stringer foundation that supports every inch of the boat, ensuring a safe, smooth ride.



“What amazing fishing machines! These boats have precision operation, combined with the amenities that everyone desires.”

*Jason Durham | Crestliner National Pro Team*

## 9 CONSECUTIVE CSI AWARDS



## ENDURING QUALITY

At Crestliner, integrity and passion drives every decision, from the builders who make the boats to the anglers who use them. We take pride in our generations of engineering innovation—designing boats that last generations too.



## INDUSTRY'S STRONGEST WARRANTY

Crestliner was the first to offer a limited lifetime warranty on all mainseam welds and a 3-year bow-to-stern warranty on virtually everything else. Then it got better—allowing Crestliner's warranty to transfer to future owners.

(Warranty differs on CR Jon and CRV Utility boats)



## GET SET WITH ALL NEW CRESTLINER GEAR

▶ See the full collection at [crestliner.com/gear](https://crestliner.com/gear)





# UP YOUR FISHING GAME WITH JASON MITCHELL



When a noted fishing expert happens to fish from a Crestliner, it's easy to pay attention. But when that expert has a television show that reaches an audience of twelve million, it's practically impossible not to notice. That's why we're so proud to partner with noted angler Jason Mitchell as he brings his fishing know-how into homes all across the Midwest with his show, *Jason Mitchell Outdoors*.

Using a Crestliner 1850 Pro Tiller, Jason takes viewers through the ins and outs of fishing in some of the upper Midwest's best lakes. "We are elated to work with Crestliner and really value their integrity and corporate culture and truly love fishing out of their boats," said Mitchell. "[And] the new Crestliners have an unbelievable ride. No matter how you like to fish, there is a very well built Crestliner boat loaded with great fishing features that will work specifically for you."

It's clear Jason knows what thousands of fishing enthusiasts also know: that there isn't a more durable, fishable and innovative boat on the water today.

## FOR 2017, WE ADDED EVEN MORE INNOVATION



### SUPER HAWK SERIES



**The Super Hawk is arguably one of the most versatile models in the Crestliner lineup. Designed for both fishing and recreation, this boat owns the water. And for 2017, the redesigned Super Hawk gets even better.**

It starts with the innovative conversion bow that allows boaters to transition between a full fishing deck or open bow seating in a matter of seconds. Simply deploy the bow platform to give yourself more fishing room or remove it to open up more seating with new snapless cushions or a bowpad when friends and family are around. And take advantage of even more seating with now-standard stern jump seats.



Additionally, the new Super Hawk comes with refreshed black consoles that feature an additional 12V plug-in, updated gauges, and a redesigned glove box and dashboard. What's more, each Super Hawk now features a starboard rod rack (see below) as well as a 10-gallon bow livewell on boats larger than the 1650. Everything we added not only offers more fishing features, storage and a sleeker look; but also more accessibility, style and ergonomics.



#### New Starboard Rod Rack Capacity

1650:	1750:	1850:	1950:
Four 7' rods	Two 7'6" rods	Two 8' rods	Two 9' rods



### 1600 VISION

The redesigned 1600 Vision packs all the necessary fishing features into a new bow deck layout based on that of the 1600 Vision Tiller. The new bow layout features dual storage compartments, designated trolling motor battery storage and increased livewell capacity (17-gallon), giving you more room for your gear and your catch. This intuitive layout was designed for performance and your fishing needs.



### 2050 COMMANDER

This rugged utilitarian boat with great fishing features is built for those looking to attack big fish found in big water. With the addition of a new bow step-up and optional helm seating storage, the new 2050 Commander includes everything the 1850 has, including center rod storage and a high performance hull running surface.



2150 Sportfish SST

# SPORTFISH

2150 | 1950 | 1850

## BRING ON THE DAY

**Sometimes, all the perfect vacation needs is an early morning fishing trip. And once the rest of the family crawls out of bed, you can convert your Sportfish into a recreation boat everyone can enjoy on the water.**

The legendary Sportfish is both a top-notch fishing boat and a family-friendly recreation boat—all wrapped up in a durable, comfortable

package. Built using Crestliner's legendary all-welded aluminum hull construction, this boat features a spacious conversion bow, a feature-rich helm and Pro seats that make all-day angling a lot more comfortable. And when the whole family wants in, the Sportfish seamlessly transitions to a full-service recreation boat. Fishing and boating. Talk about a perfect vacation.

2150 Sportfish SST

1950 Sportfish SST





KEY FEATURES & POPULAR OPTIONS

**1 FEATURE-RICH HELM**  
The feature-rich helm station features stitched vinyl-wrapped panels, a Boss® stereo with USB charging port, Bluetooth capability and chrome gauges.

**2 HELM AND PASSENGER RECLINING CAPTAIN'S CHAIRS**  
Optional reclining captain's chairs with dual armrests and supple cushioning are a popular choice among anglers who value comfort.

**3 VINYL-WRAPPED PORT ROD STORAGE**  
Innovative vinyl-wrapped port rod storage with topside cubby tray. (OB: four 8' capacity, SST: four 7'6" capacity.)

**4 IN-FLOOR ROD/SKI STORAGE**  
The high-capacity center in-floor storage locker provides ample space for all your watersports gear or holds rods up to 8' (2150/1950) and 7'6" (1850) in length.

**5 REMOVABLE TABLE**  
From lunch with the family to hosting friends for a cruise, give your roomy Sportfish even more comfort with an optional removable table that fits in the bow and cockpit.

MORE FEATURES & OPTIONS

- Pro Seats
- SST Swim Platform (SST Only)
- SureMount Gunnel Accessory System
- Space for optional kicker motor
- Upgraded Dual Stereo System\*
- Under Gunnel Blue LED Lighting\*
- Snap-In Carpet\*

\*Optional



2150 Sportfish SST

SPORTFISH

SPECIFICATIONS

	2150 SPORTFISH SST		2150 SPORTFISH OB	
Overall Length	22' 11"	6.99 m	21' 11"	6.68 m
Boat/Motor/Trailer Length	26' 2"	7.98 m	25' 2"	7.67 m
Boat/Motor/Trailer Width	8' 6"	2.59 m	8' 6"	2.59 m
Boat/Motor/Trailer Height	7' 7"	2.31 m	7' 7"	2.31 m
Beam	102"	259 cm	102"	259 cm
Weight (Boat only, dry)	2,388#	1,083 kg	2,150#	975 kg
Max Weight Capacity	2,400#	1,089 kg	2,400#	1,089 kg
Max Person Capacity	10	10	10	10
Max HP Capacity	350	350	350	350
Fuel Capacity	54 gal	204 L	54 gal	204 L
Rod Capacity	10	10	10	10
Max Rod Length (# of rods)	8' (4)	8' (4)	8' (4)	8' (4)

COLORS & CONFIGURATIONS

- BASE - ACCENT - INTERIOR
- Black Metallic - Canyon Brown Metallic - Tan
  - Summit White - Canyon Brown Metallic - Tan
  - Summit White - Black Metallic - Gray
  - Summit White - Blue Flame Metallic - Gray
  - Summit White - Red Flame Metallic - Gray
  - Summit White - Silver Metallic - Gray
  - Silver Metallic - Black Metallic - Gray
  - Silver Metallic - Blue Flame Metallic - Gray
  - Silver Metallic - Red Flame Metallic - Gray

Mad Fish Graphics and Shock Effect wrap available as special option.



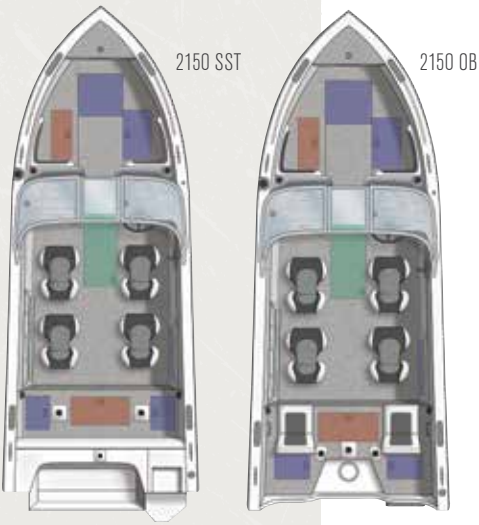
Walk Through

See crestliner.com for additional floorplans

Rod Storage

Storage

Livewell







SPORTFISH

1850 Sportfish OB

SPECIFICATIONS

	1950 SPORTFISH SST		1950 SPORTFISH OB		1850 SPORTFISH SST		1850 SPORTFISH OB	
Overall Length	20' 10"	6.35 m	19' 9"	6.00 m	19' 9"	6.02 m	18' 9"	5.72 m
Boat/Motor/Trailer Length	23' 10"	7.26 m	22' 11"	6.96 m	22' 3"	6.78 m	21' 5"	6.53 m
Boat/Motor/Trailer Width	8' 6"	2.59 m	8' 6"	2.59 m	8' 6"	2.59 m	8' 6"	2.59 m
Boat/Motor/Trailer Height	7' 1"	2.16 m	7' 1"	2.16 m	6' 10"	2.08 m	6' 10"	2.08 m
Beam	98"	248 cm	98"	248 cm	96"	244 cm	96"	244 cm
Weight (Boat only, dry)	2,082#	944 kg	1,925#	873 kg	1,750#	794 kg	1,700#	771 kg
Max Weight Capacity	2,100#	953 kg	2,100#	953 kg	1,850#	839 kg	1,850#	839 kg
Max Person Capacity	9	9	9	9	8	8	8	8
Max HP Capacity	225	225	225	225	200	200	200	200
Fuel Capacity	40 gal	151 L	40 gal	151 L	37 gal	140 L	37 gal	140 L
Rod Capacity	10	10	10	10	10	10	10	10
Max Rod Length	8' (4)	8' (4)	8' (8)	8' (8)	7' 6" (8)	7' 6" (8)	8' (4)	8' (4)

COLORS & CONFIGURATIONS

- BASE - ACCENT - INTERIOR
- Black Metallic - Canyon Brown Metallic - Tan
  - Summit White - Canyon Brown Metallic - Tan
  - Summit White - Black Metallic - Gray
  - Summit White - Blue Flame Metallic - Gray
  - Summit White - Red Flame Metallic - Gray
  - Summit White - Silver Metallic - Gray
  - Silver Metallic - Black Metallic - Gray
  - Silver Metallic - Blue Flame Metallic - Gray
  - Silver Metallic - Red Flame Metallic - Gray

Mad Fish Graphics and Shock Effect wrap available as special option.



Walk Through

See crestliner.com for additional floorplans

Rod Storage

Storage

Livewell



1950 SST



1950 OB

KEY FEATURES & POPULAR OPTIONS

1 LARGE COCKPIT WITH WALK-THROUGH WINDSHIELD

There is no shortage of space or versatility when you step inside the Sportfish, so bring the whole crew and cast-off from anywhere. Includes four Pro seats.

2 CONVERSION BOW

Go from fish to ski, and back, in seconds with the Sportfish's conversion bow.

3 STERN CASTING DECK

Large stern casting deck accommodates two pedestal seat bases, storage compartments and a livewell. Optional conversion stern bench (shown) is also available on outboard models only.

4 SST SWIM PLATFORM

Throw the anchor and enjoy a swim with the SST cut-away step and non-skid angled swim platform with an under-mount ladder. (SST models only.)

5 SUREMOUNT GUNNEL ACCESSORY SYSTEM

Removable SureMount aluminum accessory brackets let you slide your favorite accessories along the gunnel for perfect placement without drilling.

MORE FEATURES & OPTIONS

- Removable Ski Pylon\*\*
- In-Floor Rod/Ski Storage with Rod Rack System\*
- Vinyl-Wrapped Side Storage With Topside Storage Tray
- New! 12V Port Console Outlet
- Stainless Steel Retractable Cleats
- Infinity Speaker Upgrade\*
- Dual Stereo System Upgrade\*
- Removable Table\*
- Snap-In Carpet\*

\*Optional  
\*\*Standard on SST, Optional on OB

▶ For a full video walk-through of the Sportfish series, visit crestliner.com





National Pro Team Member Jason Durham in the 1750 Super Hawk



# SUPER HAWK

1950 | 1850 | 1750 | 1650

## EXPERIENCE THE BEST OF WHAT THE WATER HAS TO OFFER

**From fishing to boating to everything in between, a lot of fun can be had on the open water. Lucky for you, the redesigned Super Hawk can help you do it all.**

This powerful and adaptable boat is designed to reach new waters, with ample fishing and

boating features like increased storage and a snapless conversion bow. The Super Hawk features Crestliner's all-welded aluminum hull construction, giving you confidence to take on any fishing, leisure or sport adventures.



National Pro Team Member Jason Durham



1950 Super Hawk



Pro Staff Member Nichole Mara in the 1850 Super Hawk





SUPER HAWK

NEW

NEW

NEW

1950 Super Hawk

SPECIFICATIONS

	1950 SUPER HAWK		1850 SUPER HAWK		1750 SUPER HAWK	
Overall Length	19' 9"	6.02 m	18' 9"	5.71 m	17' 9"	5.41 m
Boat/Motor/Trailer Length	22' 8"	6.91 m	21' 5"	6.53 m	20' 6"	6.25 m
Boat/Motor/Trailer Width	8' 6"	2.59 m	8' 6"	2.59 m	8' 6"	2.59 m
Boat/Motor/Trailer Height	7'	2.13 m	6' 9"	2.06 m	6' 8"	2.03 m
Beam	98"	249 cm	94"	239 cm	94"	239 cm
Weight (Boat only, dry)	1,836#	833 kg	1,650#	748 kg	1,450#	658 kg
Max Weight Capacity	2,000#	907 kg	1,800#	816 kg	1,700#	771 kg
Max Person Capacity	9	9	8	8	7	7
Max HP Capacity	225	225	200	200	175	175
Fuel Capacity	40 gal	151 L	37 gal	140 L	28 gal	106 L
Rod Capacity	11	11	11	11	11	11
Max. Rod Length	9' (5)	9' (5)	8' (5)	8' (5)	7' 6" (5)	7' 6" (5)

COLORS & CONFIGURATIONS

BASE - ACCENT - INTERIOR

- Black Metallic - Canyon Brown Metallic - Tan
- Summit White - Canyon Brown Metallic - Tan
- Summit White - Black Metallic - Gray
- Summit White - Blue Flame Metallic - Gray
- Summit White - Red Flame Metallic - Gray
- Summit White - Silver Metallic - Gray
- Silver Metallic - Black Metallic - Gray
- Silver Metallic - Blue Flame Metallic - Gray
- Silver Metallic - Red Flame Metallic - Gray

Mad Fish Graphics and Shock Effect wrap available as special option.



Walk Through

1950  
See crestliner.com for  
additional floorplans

Rod Storage

Storage

Livewell



KEY FEATURES & POPULAR OPTIONS

1 PREMIUM CONSOLE DESIGN

New sleek black console features chrome gauges, lighted rocker switches and plenty of space to mount all sizes of electronics.

2 STERN LIVEWELL

An aerated stern livewell makes for easy to keep your catch alive. (1950: 17-gal, 1850/1750: 15-gal)

3 STERN JUMP SEATS

The new stern layout features standard jump seats, drink holders, throw tray and tackle tray storage.

4 IN-FLOOR STORAGE

The high-capacity center in-floor storage locker provides ample space for all your watersports gear. Optional rod rack tube system accommodates 8' (1950) and 7'6" (1850/1750) rods.

5 SNAPLESS BOW PLATFORM PAD

Bow platform with new optional snapless pad and bolsters provide additional lounging space.

MORE FEATURES & OPTIONS

- Bow Casting Platform
- Roomy Cockpit & Walk-Through Windshield
- Quick Access Rod Rack System
- Dual Stereo Upgrade with USB Phone Charging, Color Display, Pandora Capability and Two Speakers\*
- SureMount Gunnel Accessory System with Optional Accessories
- Swim Platform with Ladder\*
- Vinyl Flooring\*
- Optional Packages (Fish Package, Sport Package, Full Enclosure Package)
- Pro Seats\*
- Conversion Stern Bench\*

\*Optional

▶ For a full video walk-through of the Super Hawk series, visit crestliner.com







## KEY FEATURES & POPULAR OPTIONS

- 1

**PREMIUM CONSOLE DESIGN**  
New sleek black console features chrome gauges, lighted rocker switches and plenty of space to mount all sizes of electronics.
- 2

**JUMP SEATS**  
New! Standard jump seats fold flat to create a broad casting deck and flip up for additional seating.
- 3

**CONVERSION BOW**  
Go from fish to ski and back in just seconds.
- 4

**STERN DECK**  
Stern deck features a large casting platform, abundant storage and a 9-gallon aerated livewell.
- 5

**QUICK-ACCESS ROD RACK SYSTEM**  
Starboard under-gunnel storage and quick access rod rack system.

## MORE FEATURES & OPTIONS

- Bow Cargo Netting Storage\*
- Pro Seats\*
- Snapless Bow Platform Pad\*
- Boss® or Dual Stereo System with Speakers\*
- SureMount Gunnel Accessory System with Optional Accessories
- Washdown System\*
- Swim Platform with Ladder\*
- In-Floor Trolling Motor Battery Storage
- Stainless Steel Flip Up Cleats\*

\*Optional

▶ For a full video walk-through of the Super Hawk, visit [crestliner.com](https://crestliner.com)

## SUPER HAWK



1650 Super Hawk

NEW



### SPECIFICATIONS

Overall Length	16' 9"	5.10 m
Boat/Motor/Trailer Length	19' 7"	5.97 m
Boat/Motor/Trailer Width	7' 6"	2.29 m
Boat/Motor/Trailer Height	6' 7"	2.01 m
Beam	86.5"	220 cm
Weight (Boat only, dry)	1,230#	558 kg
Max Weight Capacity	1,500#	680 kg
Max Person Capacity	6	6
Max HP Capacity	115	115
Fuel Capacity	20 gal	75.5 L
Rod Capacity	8	8
Max Rod Length (# of rods)	7' (8)	7' (8)

### 1650 SUPER HAWK

### COLORS & CONFIGURATIONS

BASE - ACCENT - INTERIOR		
■	Black Metallic - Canyon Brown Metallic - Tan	
■	Summit White - Canyon Brown Metallic - Tan	
■	Summit White - Black Metallic - Gray	
■	Summit White - Blue Flame Metallic - Gray	
■	Summit White - Red Flame Metallic - Gray	
■	Summit White - Silver Metallic - Gray	
■	Silver Metallic - Black Metallic - Gray	
■	Silver Metallic - Blue Flame Metallic - Gray	
■	Silver Metallic - Red Flame Metallic - Gray	

Mad Fish Graphics available as special option.

Walk Through

1650  
See [crestliner.com](https://crestliner.com) for additional floorplans

Rod Storage

Storage

Livewell







2050 Authority

2250 Authority



## KEY FEATURES & POPULAR OPTIONS

### 1 PREMIUM CONSOLE DESIGN

An ergonomic wrap-around console accommodates multiple electronics, with both consoles featuring convenient storage compartments below.

### 2 20-GALLON STERN LIVEWELL

The aerated 20-gallon stern livewell, complete with timer, makes the perfect home for big water fish. When not full of water, the insulated walls hold plenty of ice to keep your catch fresh.

### 3 STARBOARD STORAGE

With two enclosed compartments and shelf storage, there's endless stowing space for even the most gear-heavy anglers.

### 4 PORT & STARBOARD WINDSHIELD WIPERS

New! Attack the elements in full confidence with optional port and starboard windshield wipers.

### 5 VERTICAL ROD HOLDERS

Never fear being under equipped with this set of six optional vertical rod holders to keep your rods and reels secure.



1



2



3



4



5

## BUILT TO HOLD ALL OF YOUR BIG CATCH STORIES

**Durable enough to withstand the harshness of big, open waters. Comfortable enough to spend all day fishing on them.**

It all starts with our legendary all-welded aluminum hull construction and continues with premium fishing features like a lockable port rod rack, premium console design and an in-floor rod locker. Add spacious storage, and you'll find the Authority hits hard from every angle.

### SPECIFICATIONS

	2250 AUTHORITY		2050 AUTHORITY	
Overall Length	22' 11"	6.99 m	20' 10"	6.35 m
Boat/Motor/Trailer Length	26' 2"	7.98 m	23' 10"	7.26 m
Boat/Motor/Trailer Width	8' 6"	2.59 m	8' 6"	2.59 m
Boat/Motor/Trailer Height	7' 7"	2.31 m	7' 1"	2.16 m
Beam	102"	259 cm	98"	248 cm
Weight (Boat only, dry)	2,175#	987 kg	2,025#	919 kg
Max Weight Capacity	2,400#	1,089 kg	2,100#	953 kg
Max Person Capacity	10	10	9	9
Max HP Capacity	350	350	225	225
Fuel Capacity	54 gal	204 L	40 gal	151 L
Rod Capacity	16	16	16	16
Max Rod Length (# of rods)	9' (10)	9' (10)	9' (10)	9' (10)

### COLORS & CONFIGURATIONS

BASE - ACCENT - INTERIOR

■ Silver Metallic - Black Metallic - Gray

■ Silver Metallic - Blue Flame Metallic - Gray

■ Silver Metallic - Red Flame Metallic - Gray

Mad Fish Graphics and Shock Effect wrap available as special option



Walk Through

2250  
See [crestliner.com](http://crestliner.com) for additional floorplans

Rod Storage

Storage

Livewell



## MORE FEATURES & OPTIONS

- Lockable Port Rod Rack System
- 15-Gallon Bow Livewell
- SureMount Gunnel Accessory System with Optional Accessories
- Four Pro Seats
- In-Floor Rod Locker
- Roomy Cockpit & Walk-Through Windshield
- Washdown System\*
- Removable Stern Seats with Fixed Backrest/Thighboards\*
- In-Floor Fish Box\*
- Butt Seat\*
- Full Enclosure Package\*

\*Optional

▶ For a full video walk-through of the Authority, visit [crestliner.com](http://crestliner.com)



Pro Staff Member Brenton Hell & National Pro Team Member Mike Sorenson

2050 Commander

# COMMANDER

2050 | 1850

## COMMAND PERFORMANCE

The Crestliner Commander is built with the performance you need to command big waters.

Featuring legendary all-welded aluminum hull construction, the Commander is able to withstand the harshness of the big, open water while you enjoy high and dry comfort on the chase. With a bow livewell, large open cockpit and under-gunnel rod racks, catching fish won't be a problem.

### SPECIFICATIONS

Overall Length	20' 8"	6.30 m
Boat/Motor/Trailer Length	24'	7.32 m
Boat/Motor/Trailer Width	8' 6"	2.59 m
Boat/Motor/Trailer Height	7' 4"	2.34 m
Beam	94"	239 cm
Weight (Boat only, dry)	1,715#	778 kg
Max Weight Capacity	2,200#	998 kg
Max Person Capacity	8	8
Max HP Capacity	200	200
Fuel Capacity	40 gal	151 L
Rod Capacity	18	18
Max Rod Length (# of rods)	10' (15)	10' (15)

NEW

### 2050 COMMANDER

### 1850 COMMANDER

### COLORS & CONFIGURATIONS

BASE - ACCENT - INTERIOR

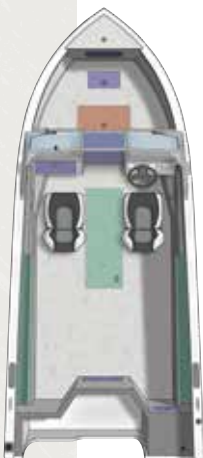
-  Silver Metallic - Black Metallic - Gray
-  Silver Metallic - Blue Flame Metallic - Gray
-  Silver Metallic - Red Flame Metallic - Gray

Mad Fish Graphics available as Special Option



Walk Through

2050  
See crestliner.com for additional floorplans  
Rod Storage  
Storage  
Livewell



## KEY FEATURES & POPULAR OPTIONS

### 1 BOW AERATED LIVEWELL

You'll find an 18-gallon aerated livewell in the bow, right where you need it.

### 2 ALL ALUMINUM CONSOLE

The sturdy and roomy console features large, flat surfaces for mounting electronics and direct-mounted gauges.

### 3 HEAVY DUTY WINDSHIELD

Command the elements with the heavy duty windshield, featuring ultra-tough, all-welded construction and optional windshield wipers.

### 4 PORT & STARBOARD BENCH SEAT WITH STORAGE COMPARTMENT

Optional port and starboard side bench seating provide extra seating and ample tuck-under storage.

### 5 IN-FLOOR ROD LOCKER

Load up to five 8' (2050) and 7' (1850) rods into a locking center rod locker.

## MORE FEATURES & OPTIONS

- Starboard & Portside Under-Gunnel Rod Rack hold rods up to 10'
- Aft Cutting Board
- SureMount Gunnel Accessory System with Optional Accessories
- Washdown System\*
- Heavy Duty Canvas Cover and Full Enclosure\*
- In-Floor Fish Box\*
- New! Bow Step Storage Box\*
- New! Storage Boxes Below Helm and Passenger Seats\*
- Removable Stern Jumpseats\*

\*Optional







# BUILT TO DOMINATE

**Every time you're out on the water, it's you against the fish. And with the competition-ready Crestliner Raptor in your corner, you'll always come out a winner.**

By combining absolute stability and performance with ample features,

this fishing machine is poised to dominate. The Raptor boasts a spacious bow and stern livewells, a wide-open cockpit and tons of storage right where you need it so your gear is always within reach. There are no excuses in tournament fishing. You'll never need one with the Crestliner Raptor series.







## KEY FEATURES & POPULAR OPTIONS

**1 17-TUBE ILLUMINATED CENTER ROD LOCKER**  
The lockable, illuminated center bow rod locker features three rows of storage with a total of 17 tubes. Holds 6 rods up to 8'6" in length, 6 rods up to 8' in length, and 5 rods up to 7'6" in length.

**2 WALK-THROUGH WINDSHIELD**  
Walk-through windshield with feature-rich helm and port consoles, lockable drawer under starboard console, and tackle trays and cooler storage under port console.

**3 BOW STORAGE**  
The roomy, storage-rich bow deck includes deep space to keep your gear safe and secure.

**4 BOW & STERN LIVEWELLS**  
The bow includes a 12-gallon insulated and aerated livewell with timer as well as an aerated 1.5-gallon deck baitwell with timer and the stern features a 26-gallon insulated and aerated livewell (shown) with recirculating system, bait bucket, and fresh-water pickup.

**5 CONVERSION STERN BENCH**  
The optional conversion stern bench gives you a larger fishing deck when down and additional seating when up.

### MORE FEATURES & OPTIONS

- Port Rod Storage holds two 10' rods
- Easy Access Fish Ruler with Designated Storage
- Snap-In Carpet
- Butt Seat
- SureMount Gunnel Accessory System with Optional Accessories
- Washdown System
- Full Enclosure Package

▶ For a full video walk-through of the Raptor, visit [crestliner.com](http://crestliner.com)



National Pro Team Member Jason Durham in the 2100 Raptor

### SPECIFICATIONS

Overall Length	20' 11"	6.38 m
Boat/Motor/Trailer Length	23' 11"	7.29 m
Boat/Motor/Trailer Width	8' 6"	2.59 m
Boat/Motor/Trailer Height	7' 1"	2.16 m
Beam	102"	259 cm
Weight (Boat only, dry)	2,170#	984 kg
Max Weight Capacity	2,200#	998 kg
Max Person Capacity	7	7
Max HP Capacity	350	350
Fuel Capacity	56 gal	212 L
Rod Capacity	19	19
Max Rod Length (# of rods)	10' (2)	10' (2)

### 2100 RAPTOR

### COLORS & CONFIGURATIONS

#### BASE - ACCENT - INTERIOR

- Summit White - Black Metallic - Gray
- Summit White - Blue Flame Metallic - Gray
- Summit White - Red Flame Metallic - Gray
- Summit White - Silver Metallic - Gray
- Silver Metallic - Black Metallic - Gray
- Silver Metallic - Blue Flame Metallic - Gray
- Silver Metallic - Red Flame Metallic - Gray
- Black Metallic - Black Metallic - Gray

Mad Fish Graphics and Shock Effect wrap available as special option.



Walk Through

2100

Rod Storage

Storage

Livewell





RAPTOR



Team Crestliner Members Jason Mitchell & Alie Witthans in the 1750 Raptor SC



1850 Raptor WT

SPECIFICATIONS

	1850 RAPTOR		1750 RAPTOR	
Overall Length	18' 8"	5.69 m	17' 8"	5.38 m
Boat/Motor/Trailer Length	21' 5"	6.53 m	21' 2"	6.45 m
Boat/Motor/Trailer Width	8' 6"	2.59 m	8' 6"	2.59 m
Boat/Motor/Trailer Height	6' 10"	2.08 m	6' 5"	1.96 m
Beam	96"	244 cm	96"	244 cm
Weight (Boat only, dry)	1,840# SC 1,940# WT	835 kg SC 880 kg WT	1,770# SC 1,870# WT	803 kg SC 848 kg WT
Max Weight Capacity	1,700#	771 kg	1,600#	726 kg
Max Person Capacity	7	7	6	6
Max HP Capacity	200	200	150	150
Fuel Capacity	40 gal	151 L	40 gal	151 L
Rod Capacity	14	14	14	14
Max Rod Length (# of rods)	9' (2)	9' (2)	8' (2)	8' (2)

COLORS & CONFIGURATIONS

BASE - ACCENT - INTERIOR

- Summit White - Black Metallic - Gray
- Summit White - Blue Flame Metallic - Gray
- Summit White - Red Flame Metallic - Gray
- Summit White - Silver Metallic - Gray
- Silver Metallic - Black Metallic - Gray
- Silver Metallic - Blue Flame Metallic - Gray
- Silver Metallic - Red Flame Metallic - Gray
- Black Metallic - Black Metallic - Gray

Mad Fish Graphics and Shock Effect wrap available as special option.



Side Console



Dual Console



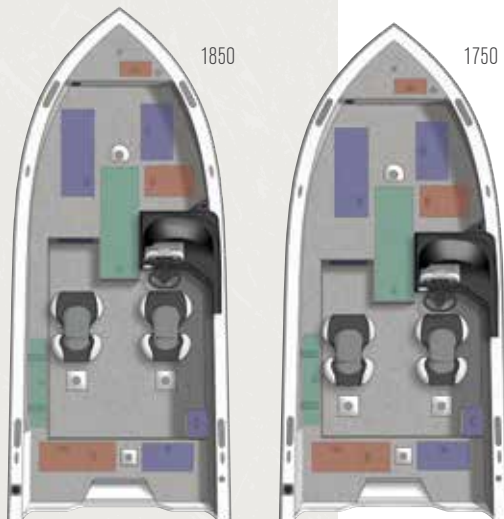
Walk Through

See [crestliner.com](http://crestliner.com) for additional floorplans

Rod Storage

Storage

Livewell



KEY FEATURES & POPULAR OPTIONS

1 12-TUBE ILLUMINATED CENTER ROD LOCKER

The lockable, illuminated center bow rod locker features 12 tubes, holding a total of 4 rods up to 8' in length, 2 rods up to 7'9" in length, and 6 rods up to 7'6" in length.

2 MULTIPLE CONFIGURATIONS

A well-equipped console has ample space for mounting large electronics and lighted rocker switches. Available in side console, dual console, or walk-through.

3 PORT UNDER CONSOLE STORAGE

Keep your gear out of sight but never out of reach with the new locking, port under console storage. Includes 5 tackle trays and cooler.

4 BUTT SEAT

Optional butt seat provides added comfort and maneuverability when fishing from the bow.

MORE FEATURES & OPTIONS

- Easy Access Fish Ruler with Designated Storage
- 18-Gallon Stern Livewell with Bait Bucket and Timer
- 12-Gallon Bow Livewell with Timer
- 1.5-Gallon Baitwell with Timer
- Walk-Through Windshield\*
- Pro Seats
- Lockable Port Rod Storage
- Vinyl Flooring\*
- Boss® or Dual Stereo System with Speakers\*
- Stern Conversion Bench\*
- SureMount GUNNEL Accessory System with Optional Accessories

\*Optional

▶ For a full video walk-through of the Raptor, visit [crestliner.com](http://crestliner.com)



1



2



3



4



Jason Mitchell, Host of *Jason Mitchell Outdoors* in the 1950 Fish Hawk WT



# FISH HAWK

1950 | 1850 | 1750 | 1650

## LOVED BY FISHERMAN. FEARED BY FISH.

**Spend a day on the water and you'll soon discover why anglers have made the Crestliner Fish Hawk our most popular boat.**

Few boats have seen as many trophy catches as Crestliner's legendary Fish Hawk. Which is why it's so popular with fisherman—and so

unpopular amongst fish. The reason is simple: every inch was built with the angler in mind. From a spacious casting deck and cockpit to expansive locking rod storage to livewells right where you need them, the Fish Hawk is the ultimate fishing boat.



1650 Fish Hawk SC



National Pro Team Member Mike Sorenson in the 1750 Fish Hawk WT





## KEY FEATURES & POPULAR OPTIONS

### 1 BOW CASTING DECK

A large bow casting deck makes for easy maneuverability on board. Deep storage compartments stow plenty of gear and a livewell keeps your catch fresh.

### 2 CENTER ROD STORAGE LOCKER WITH BATTERY STORAGE

Locking center rod storage holds up to ten rods and its deep recess stores your optional trolling motor battery and charger.

### 3 PRO SEAT

Fishermen on longer treks will appreciate the additional support of the optional Pro seats.

### 4 STERN LIVEWELL

The 1950 Fish Hawk features a deep 17-gallon aerated stern livewell complete with timer, divider, bait bucket and separate lids for the livewell and baitwell. 1850 and 1750 feature a 15-gallon aerated livewell with timer. (1750/1850 shown)

### 5 ROOMY COCKPIT & MULTIPLE CONFIGURATIONS

With our innovative hull design, the Fish Hawk sports a wider, more spacious cockpit for you to navigate. Configure your Fish Hawk as a Side Console, Dual Console, or Walk Through.

## MORE FEATURES & OPTIONS

- SureMount Gunnel Accessory System
- Locking Port Rod Storage with Topside Rod Straps
- Aerated Bow Livewell with Timer (1950: 9-Gallon, 1850/1750: 12-Gallon)
- Swim Platform with Ladder\*
- Conversion Stern Bench\*
- Easy Access Fish Ruler with Designated Storage\*
- Vinyl Flooring\*
- Platinum Edition Package\*
- 57" 21-Gallon Muskie Livewell (1950/1850)
- Kicker Motor\*

\*Optional

▶ For a full video walk-through of the Fish Hawk, visit [crestliner.com](http://crestliner.com)



1850 Fish Hawk SC

## SPECIFICATIONS

	1950 FISH HAWK		1850 FISH HAWK		1750 FISH HAWK	
Overall Length	19' 6"	5.94 m	18' 6"	5.63 m	17' 6"	5.33 m
Boat/Motor/Trailer Length	22' 6"	6.86 m	21' 5"	6.53 m	20' 6"	6.25 m
Boat/Motor/Trailer Width	8' 6"	2.59 m	8' 6"	2.59 m	8' 6"	2.59 m
Boat/Motor/Trailer Height	6' 2"	1.88 m	6' 5"	1.96 m	6' 5"	1.96 m
Beam	101"	257 cm	95.5"	243 cm	95"	241 cm
Weight (Boat only, dry)	1,650#	748 kg	1,500#	680 kg	1,480#	671 kg
Max Weight Capacity	2,100#	952 kg	1,600#	726 kg	1,550#	703 kg
Max Person Capacity	7	7	6	6	6	6
Max HP Capacity	225	225	150	150	115	115
Fuel Capacity	50 gal	189 L	32 gal	121 L	27 gal	102 L
Rod Capacity	12	12	12	12	12	12
Max Rod Length (# of rods)	9' (2)	9' (2)	8' (2)	8' (2)	8' (2)	8' (2)

## COLORS & CONFIGURATIONS

### BASE - ACCENT - INTERIOR

- Summit White - Black Metallic - Gray
- Summit White - Blue Flame Metallic - Gray
- Summit White - Red Flame Metallic - Gray
- Summit White - Silver Metallic - Gray
- Silver Metallic - Black Metallic - Gray
- Silver Metallic - Blue Flame Metallic - Gray
- Silver Metallic - Red Flame Metallic - Gray
- Black Metallic - Black Metallic - Gray

Mad Fish Graphics and Shock Effect wrap available as special option.



Side Console



Dual Console



Walk Through

1950 SC

See [crestliner.com](http://crestliner.com) for additional floorplans

Rod Storage

Storage

Livewell

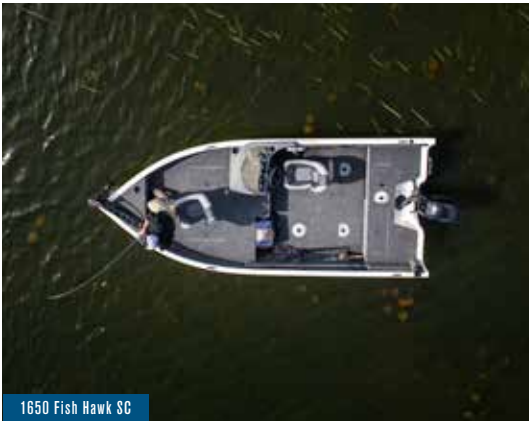






FISH HAWK

1650 Fish Hawk WT



1650 Fish Hawk SC

SPECIFICATIONS

	1650 FISH HAWK	
Overall Length	16' 9"	5.11 m
Boat/Motor/Trailer Length	19' 7"	5.97 m
Boat/Motor/Trailer Width	7' 6"	2.29 m
Boat/Motor/Trailer Height	5' 11"	1.80 m
Beam	86.5"	220 cm
Weight (Boat only, dry)	1,050#	476 kg
Max Weight Capacity	1,450#	658 kg
Max Person Capacity	6	6
Max HP Capacity	90	90
Fuel Capacity	19 gal	72 L
Rod Capacity	15	15
Max Rod Length (# of rods)	9' (SC-5, WT-3)	9' (SC-5, WT-3)

COLORS & CONFIGURATIONS

BASE - ACCENT - INTERIOR

- Summit White - Black Metallic - Gray
- Summit White - Blue Flame Metallic - Gray
- Summit White - Red Flame Metallic - Gray
- Summit White - Silver Metallic - Gray
- Silver Metallic - Black Metallic - Gray
- Silver Metallic - Blue Flame Metallic - Gray
- Silver Metallic - Red Flame Metallic - Gray
- Black Metallic - Black Metallic - Gray

Mad Fish Graphics available as special option.



Side Console



Dual Console



Walk Through

1650

See crestliner.com for additional floorplans

Rod Storage

Storage

Livewell



KEY FEATURES & POPULAR OPTIONS

1 CENTER LOCKING ROD STORAGE

Center rod locker contains reel pockets and can hold five 7' and five 6'9" rods.

2 FEATURE RICH CONSOLE

Take control of your day of fishing thanks to the Lowrance® Hook-3x color fish-finding sonar, lighted toggle switches, drink holders, a MP3 cubby and a 12V power outlet.

3 CONVERSION STERN BENCH

The conversion stern bench option gives you a larger casting/fishing deck when down and additional seating when up.

4 BOW STORAGE

Bow storage offers expanded compartments with deeper and longer storage space.

5 EASY ACCESS FISH RULER

Record your catch with the Easy Access Fish Ruler. Now available for the 1650 Fish Hawk.

MORE FEATURES & OPTIONS

- 15-Gallon Aerated Stern Livewell with Timer
- Quick Access Rod Rack
- SureMount Gunnel Accessory System with Optional Accessories
- Pro Seats\*
- Vinyl Flooring\*
- TurboSwing® System\*
- Platinum Edition Package\*
- Bimini\*
- Full Enclosure Package (WT)\*

\*Optional

▶ For a full video walk-through of the Fish Hawk, visit crestliner.com



1



2



3



3



4



5



Jason Mitchell, Host of *Jason Mitchell Outdoors* in the 1850 Pro Tiller



# PRO TILLER

1850 | 1750 | 1650



1650 Pro Tiller



## WHEN IT COMES TO FISHING, COMPROMISE DOESN'T CUT IT

**If you're looking for a boat with total control and one that doesn't cut corners, look no further than the Pro Tiller.**

We put flexibility and accessibility at the forefront of the Pro Tiller's design. Designed around the driver, you'll get easy access to every feature from the driver's seat—an aerated

stern livewell and baitwell, spacious command console and more. Anglers will also appreciate the high-capacity rod locker and ample storage, making it easy to gear up for the day ahead. Total control is always within reach in the Pro Tiller series from Crestliner.





## KEY FEATURES & POPULAR OPTIONS

### 1 COMMAND CONSOLE

The durable, intuitive command console puts an electronics tray, drink holders and tackle storage all within the driver's reach.

### 2 AERATED STERN LIVEWELL & BAITWELL

15-gallon stern livewell and dedicated 2.75-gallon baitwell (1850, 1750) positioned within easy reach on both sides of the tiller control. (1650 includes baitbucket)

### 3 HIGH CAPACITY CENTER ROD LOCKER

Outfitted with individual rod tubes for protection, a spacious center rod storage area holds 10 rods and includes space for a battery and charger.

### 4 STARBOARD ROD LOCKER

Starboard rod storage holds up to 9' rods on the 1850 and 8' rods on the 1750 and 1650. Topside rod straps hold additional rods while on the move.

### 5 AMPLE BOW STORAGE

The Pro Tiller's bow has several large storage compartments, making it easier for you to get the gear you need, when you need it. (1850 shown)

## MORE FEATURES & OPTIONS

- Easy Access Fish Ruler with Designated Storage\*
- Bow Livewell (1850, 1750)
- Pro Seats\*
- Boss® Stereo\*
- SureMount Gunnel Accessory System with Optional Accessories
- Bow Baitwell\*
- Washdown System\*
- Bow Trolling Motor Outlet\*
- Vinyl Flooring\*
- Stainless Steel Flip-Up Cleats\*
- Custom Travel Cover\*

\*Optional

▶ For a full video walk-through of the Pro Tiller, visit [crestliner.com](http://crestliner.com)

## PRO TILLER

1750 Pro Tiller

### SPECIFICATIONS

	1850 PRO TILLER		1750 PRO TILLER		1650 PRO TILLER	
Overall Length	18' 6"	5.64 m	17' 6"	5.33 m	16' 10"	5.13 m
Boat/Motor/Trailer Length	21' 5"	6.53 m	21' 4"	6.50 m	19' 8"	5.99 m
Boat/Motor/Trailer Width	8' 6"	2.59 m	8' 6"	2.59 m	7' 6"	2.29 m
Boat/Motor/Trailer Height	5' 10"	1.78 m	5' 10"	1.78 m	5' 10"	1.78 m
Beam	94"	239 cm	94"	239 cm	86.5"	220 cm
Weight (Boat only, dry)	1,375#	624 kg	1,275#	578 kg	1,085#	492 kg
Max Weight Capacity	1,650#	749 kg	1,600#	726 kg	1,350#	612 kg
Max Person Capacity	6	6	6	6	6	6
Max HP Capacity	90	90	90	90	75	75
Fuel Capacity	32 gal	122 L	27 gal	102 L	20 gal	76 L
Rod Capacity	12	12	12	12	12	12
Max Rod Length (# of rods)	9' (2)	9' (2)	8' (2)	8' (2)	8' (2)	8' (2)

### COLORS & CONFIGURATIONS

#### BASE - ACCENT - INTERIOR

- Summit White - Black Metallic - Gray
- Summit White - Blue Flame Metallic - Gray
- Summit White - Red Flame Metallic - Gray
- Summit White - Silver Metallic - Gray
- Silver Metallic - Black Metallic - Gray
- Silver Metallic - Blue Flame Metallic - Gray
- Silver Metallic - Red Flame Metallic - Gray
- Black Metallic - Black Metallic - Gray

Mad Fish Graphics available as special option  
Shock Effect wrap available as special option for 1850/1750

#### Tiller

1850  
See [crestliner.com](http://crestliner.com) for additional floorplans

Rod Storage

Storage

Livewell







Pro Staff Members Alie Witthans & Nichole Mara in the 1600 Vision SC

# IT'S A BEAUTIFUL DAY TO CALL IN SICK

It's no surprise that a few hours in the morning can turn into an entire day of angling. And with the Vision under your feet, faking a cough just got a lot easier.

All jokes aside, this versatile boat is built from the hull up around your on-the-water needs with multiple configurations – Side or Dual Consoles, Walk Through windshield or Tiller to elevate your angling to new heights. Featuring an open and spacious bow casting deck, tons of storage and standard livewells, see for yourself how to make the most of your day on the water with the Vision.

## KEY FEATURES & POPULAR OPTIONS

- 1

**MULTIPLE CONFIGURATIONS**  
Multiple configurations allow you to choose the Vision that's right for you; Side Console, Dual Console and Walk Through windshield available on the 1700 and 1600. The 1600 is also available in a Tiller.
- 2

**OPEN BOW DESIGN**  
A wide, open bow design delivers fishing features like a spacious livewell, battery storage and dual compartments to keep things where they belong. (1600 Tiller, New on the 1600)
- 3

**STERN DECK**  
Stern deck features spacious casting deck and optional jump seats with storage below. The 1700 also features a 13-gallon livewell.
- 4

**BIMINI TOP**  
Stay cool on hot days with the optional bimini top.

## MORE FEATURES & OPTIONS

- 1

17-Gallon Bow Livewell (1600, 1600 T)
- 1

Port Console Extension (1600 T)\*
- 1

SureMount Gunnel Accessory System with Optional Accessories
- 1

Abundant Rod Storage
- 1

Optional Packages (Fish Package, Sport Package\*\*, Full Enclosure Package\*\*)
- 1

Travel Cover\*
- 1

Port Console (1700, 1600)\*
- 1

Easy Access Fish Ruler (1700, 1600 T)\*
- 1

Additional Deluxe Seat\*

\*Optional  
\*\*N/A on Tiller Configuration

▶ For a full video walk-through of the Vision, visit [crestliner.com](https://crestliner.com)



1 SIDE CONSOLE CONFIGURATION



2



1 WALK THROUGH CONFIGURATION



3



1 TILLER CONFIGURATION



4

### SPECIFICATIONS

	1700		1600		1600 TILLER	
Overall Length	19' 6"	5.94 m	16' 4"	4.98 m	16' 4"	4.98 m
Boat/Motor/Trailer Length	19' 6"	5.94 m	19' 1"	5.82 m	19' 1"	5.82 m
Boat/Motor/Trailer Width	7' 6"	2.29 m	7' 6"	2.29 m	7' 6"	2.29 m
Boat/Motor/Trailer Height	6'	1.83 m	5' 11"	1.80 m	5' 11"	1.80 m
Beam	88"	224 cm	81"	206 cm	81"	206 cm
Weight (Boat only, dry)	1,190#	540 kg	935#	424 kg	902#	409 kg
Max Weight Capacity	1,400#	635 kg	1,300#	590 kg	1,300#	590 kg
Max Person Capacity	6	6	5	5	5	5
Max HP Capacity	115	115	60	60	60	60
Fuel Capacity	20 gal	75 L	12 gal*	45 L	12 gal*	45 L
Rod Capacity	5	5	7	7	10	10
Max Rod Length (# of rods)	9' 6" (3)	9' 6" (3)	9' (5)	9' (5)	9' (2)	9' (2)

### COLORS & CONFIGURATIONS

BASE - ACCENT - INTERIOR

- Summit White - Red Flame Metallic - Gray
- Summit White - Silver Metallic - Gray
- Silver Metallic - Black Metallic - Gray
- Silver Metallic - Blue Flame Metallic - Gray



Side Console



Dual Console



Walk Through



Tiller

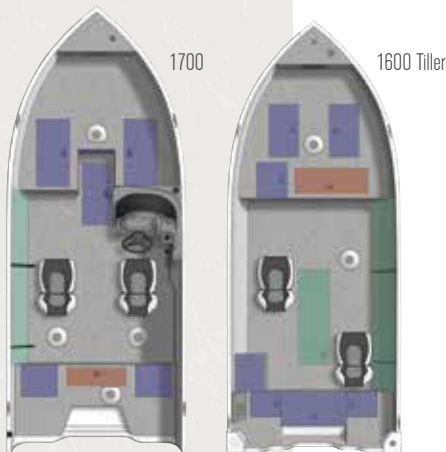
\*Portable

See [crestliner.com](https://crestliner.com) for additional floorplans

Rod Storage

Storage

Livewell







1650 Discovery SC



1450 Discovery Tiller

# DISCOVERY

1650 | 1450

## FOR THOSE ANGLING TOWARD A PERFECT DAY ON THE WATER

We don't need to tell you to go fishing. We just need to give you a reason. The Discovery is that well-built reason.

From bow to stern, you'll find practical and functional features to help you go further, like an aerated livewell, increased bow storage and in-floor and quick access rod storage. What's more, with Crestliner's all-welded aluminum hull construction you get durability you can count on. Begin every outing with confidence in the Discovery.

### SPECIFICATIONS

	1650 DISCOVERY SC		1650 DISCOVERY TILLER		1450 DISCOVERY SC		1450 DISCOVERY TILLER	
Overall Length	16' 6"	5.03 m	16' 6"	5.03 m	14' 9"	4.49 m	14' 9"	4.49 m
Boat/Motor/Trailer Length	21' 6"	6.55 m	21' 6"	6.55 m	19' 8"	5.99 m	19' 8"	5.99 m
Boat/Motor/Trailer Width	6' 4"	1.93 m	6' 4"	1.93 m	6' 4"	1.93 m	6' 4"	1.93 m
Boat/Motor/Trailer Height	5' 9"	1.75 m	5' 9"	1.75 m	5' 9"	1.75 m	5' 9"	1.75 m
Beam	75.5"	192 cm	75.5"	192 cm	75.5"	192 cm	75.5"	192 cm
Weight (Boat only, dry)	875#	397 kg	835#	379 kg	765#	347 kg	815#	370 kg
Max Weight Capacity	1,250#	567 kg	1,250#	567 kg	1,080#	490 kg	1,080#	490 kg
Max Person Capacity	5	5	5	5	4	4	4	4
Max HP Capacity	60	60	60	60	40	40	40	40
Fuel Capacity	Portable	Portable	Portable	Portable	Portable	Portable	Portable	Portable
Rod Capacity	6	6	8	8	6	6	8	8
Max Rod Length (# of rods)	9' (2)	9' (2)	9' (4)	9' (4)	7' (6)	7' (6)	7' (8)	7' (8)

## KEY FEATURES & POPULAR OPTIONS

- 1

**BOW STORAGE**  
Ample bow storage includes three large compartments and a dedicated battery compartment.
- 2

**AERATED LIVEWELL**  
An 11-gallon aerated livewell is located in the bow.
- 3

**IN-FLOOR ROD STORAGE**  
Center in-floor locking rod storage holds four rods. (1650: 8' 6", 1450: 7')

### MORE FEATURES & OPTIONS

- Quick Access Rod Rack With Storage
- Foot Trim (Tiller Only)
- Additional Deluxe Seat\*
- Windscreen\*
- Custom Travel Cover\*
- Bow Cargo Netting\*

\*Optional

▶ For a full video walk-through of the Discovery, visit [crestliner.com](https://crestliner.com)



### COLORS & CONFIGURATIONS

#### BASE - ACCENT - INTERIOR

- Summit White - Summit White - Gray
- Silver Metallic - Silver Metallic - Gray
- Summit White - Red Flame Metallic - Gray\*
- Summit White - Silver Metallic - Gray\*
- Silver Metallic - Black Metallic - Gray\*
- Silver Metallic - Blue Flame Metallic - Gray\*
- Olive Drab - Olive Drab - Tan\*

Olive Drab includes Mossy Oak Shadowgrass upholstery and tan vinyl flooring (Tiller only) \*Optional colors



Side Console



Tiller

See [crestliner.com](https://crestliner.com) for additional floorplans

Rod Storage  
Storage  
Livewell



1650 SC



1650 Tiller



SIDE CONSOLE CONFIGURATION



TILLER CONFIGURATION

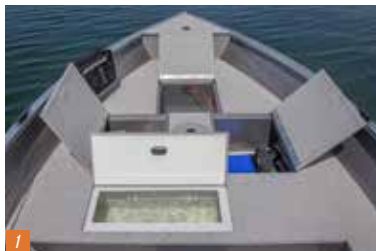




# KODIAK

1800

1800 Kodiak Tiller



SIDE CONSOLE CONFIGURATION

## BUILT AS TOUGH AS ITS NAMESAKE

An ultra-rugged, durable, Heavy Duty .100" gauge aluminum Deep-V hull bottom. Built to withstand the harshest conditions.

### 1 BOW STORAGE

Three large compartments with facing double doors and a dedicated battery compartment.

### 2 22-GALLON BOW LIVEWELL

Aerated livewell keeps your catch fresh.

## MORE FEATURES & OPTIONS

- Tiller Configuration
- Composite Flooring\*
- SureMount Gunnel Accessory System
- Quick Access and Locking Rod Storage
- Bow Cargo Netting\*
- Custom Travel Cover\*

\*Optional



# CRV

1667 | 1467 | 1457 | 1257



3

## EASY DOES IT

### 1 STERN SPLIT BENCH SEATING

The stern split bench seats make for easy access to the engine and allows for maneuverability from bow to stern. (1667, 1467 only)

### 2 PAINTED EXTERIOR AND INTERIOR

With a Matte Gray interior, the exterior can come in black or in unpainted aluminum.

### 3 BOW HANDLES

Built-in bow handles for easy mobility to and from the water.

## MORE FEATURES & OPTIONS

- Portable Fuel Tank\*
- Bench Seats
- Transom Corner Castings with Handles (1667, 1467, only)

\*Optional

### SPECIFICATIONS

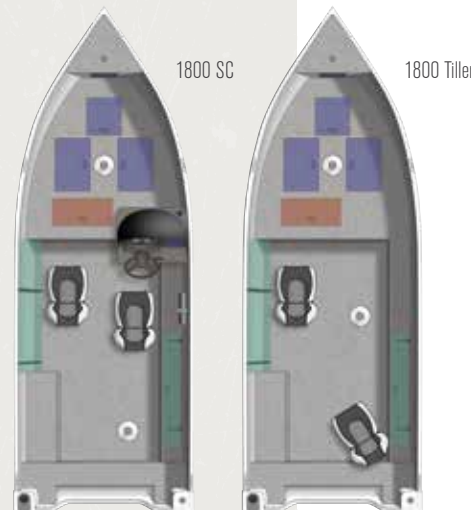
	1800 KODIAK SC		1800 KODIAK TILLER	
Overall Length	18'	5.48 m	18'	5.48 m
Boat/Motor/Trailer Length	21' 2"	6.45 m	21' 2"	6.45 m
Boat/Motor/Trailer Width	7'	2.13 m	7'	2.13 m
Boat/Motor/Trailer Height	5' 9"	1.75 m	5' 9"	1.75 m
Beam	78"	198 cm	78"	198 cm
Weight (Boat only, dry)	920#	417 kg	820#	372 kg
Max Weight Capacity	1,375#	624 kg	1,375#	624 kg
Max Person Capacity	6	6	6	6
Max HP Capacity	75	75	60	60
Fuel Capacity	19 gal	72 L	19 gal	72 L
Rod Capacity	7	7	7	7
Max Rod Length (# of rods)	7' (7)	7' (7)	7' (7)	7' (7)

### COLORS & CONFIGURATIONS

- BASE - ACCENT - INTERIOR
- Summit White - Summit White - Gray
  - Silver Metallic - Silver Metallic - Gray
  - Summit White - Red Flame Metallic - Gray\*
  - Summit White - Silver Metallic - Gray\*
  - Silver Metallic - Black Metallic - Gray\*
  - Silver Metallic - Blue Flame Metallic - Gray\*
  - Olive Drab - Olive Drab - Tan\*

Olive Drab includes Mossy Oak Shadowgrass upholstery and tan vinyl flooring (Tiller only).  
\*Optional colors

- Side Console
- Tiller
- Rod Storage
- Storage
- Livewell



### SPECIFICATIONS

	1667		1467		1457		1257	
Overall Length	16'	4.88 m	13' 11"	4.24 m	14' 1"	4.29 m	12' 1"	3.68 m
Beam	67"	170 cm	67"	170 cm	57"	145 cm	57"	145 cm
Transom Height	15"	38 cm	15"	38 cm	15"	38 cm	15"	38 cm
Weight (Boat only, dry)	295#	134 kg	271#	123 kg	147#	67 kg	110#	50 kg
Max. Weight Capacity	1,100#	499 kg	1,010#	458 kg	734#	333 kg	585#	266 kg
Max. Person Weight Capacity	5	5	5	5	4	4	3	3
Max. HP Capacity	30	30	20	20	9.9	9.9	9.9	9.9
Fuel Capacity	Portable	Portable	Portable	Portable	Portable	Portable	Portable	Portable
Aluminum Gauge Bottom	.072"	.072"	.064"	.064"	.050"	.050"	.050"	.050"

### COLORS & CONFIGURATIONS

- BASE - ACCENT - INTERIOR
- Aluminum - Aluminum - Matte Gray
  - Black - Black - Matte Gray

1257  
See crestliner.com for additional floorplans





# FEATURES & OPTIONS

Below are just some of the features and options available to tailor your Crestliner to your personal style of boating and fishing. For more information visit [crestliner.com](http://crestliner.com). *\*Not all features are available on all boats.*



## DELUXE SEAT

The Deluxe Seat is extra wide for added comfort. The cushioned backrest conveniently folds down.



## PRO SEAT

Fishermen on long treks will appreciate the additional support of the pro style seats.



## RECLINING CAPTAIN'S CHAIR

Dual armrests and supple cushioning make the Reclining Captain's Chair a popular choice among anglers who value comfort.



## BUTT SEAT

The Butt Seat gives fishermen a sturdy spot to sit or lean against when rotated 180°.



## BOW DECK PAD

The Bow Deck Pad with bolsters creates a spacious lounge area and cushioned sundeck atop the bow deck.



## SNAP-IN CARPET

For extra comfort underfoot, add Snap-In Carpet runners, custom fitted to your Crestliner. Available for models with vinyl flooring.



## J-HOOK HAMMOCK

Relax with the innovative J-Hook Hammock with a pillow pocket. Available on Sportfish and Super Hawk (excluding 1650).



## TRAVEL COVER WITH J-HOOK

The snug, custom-cut travel cover attaches securely to extruded gunnels with easy on/off snapless J-Hooks. Walk-through models have a ratchet design without poles.



## SHOCK EFFECT WRAP

The Shock Effect Wrap has a dynamic look that says serious fishing.



## MAD FISH GRAPHICS

Show your Team Crestliner love while showing the competition you mean business with the Mad Fish Graphics.



## REMOVABLE SKI PYLON

All types of watersports are in reach with the optional ski pylon. (Available on Sportfish, Super Hawk and Vision.)



## TURBOSWING®

Pull thrill-seekers with the TurboSwing® tow bar and EZpulley.™ (Available on Fish Hawk and Raptor.)



## SWIM PLATFORM WITH LADDER

Throw the anchor and enjoy a swim thanks to the swim platform and ladder. (Fish Hawk, Super Hawk and Sportfish DB Only)



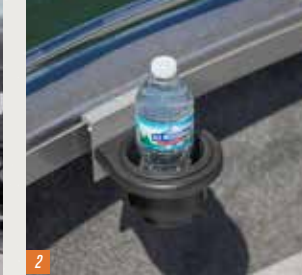
## WASHDOWN SYSTEM

Easily hose down your Crestliner after a tough day of fishing with the heavy-duty washdown system



## FULL CANVAS ENCLOSURE

Available options include side curtains, aft/drop curtain, suntop, Bimini top and tonneau cover. Covers attach securely to extruded gunnels with the easy on/off snapless J-Hooks. (Ensure proper ventilation)



## SUREMOUNT GUNNEL ACCESSORY SYSTEM

Removable SureMount aluminum accessory brackets let you slide your favorite accessories along the gunnel for perfect placement without drilling.



## SureMount Accessories

Attach and slide along the SureMount Gunnel system for perfect placement.

- |              |                 |                   |                       |
|--------------|-----------------|-------------------|-----------------------|
| 1 Rod Holder | 2 Drink Holder  | 3 Tool Holder     | 4 Down Rigger Bracket |
| 5 Tackle Bag | 6 Accessory Bag | 7 Cutting Station | 8 Fender Holder       |



DEEP-V FEATURES & OPTIONS

	SPORTFISH			SUPER HAWK				AUTHORITY		COMMANDER	
	2150	1950	1850	1950	1850	1750	1650	2250	2050	2050	1850
CONSOLE											
Console Configurations Offered	WT	WT	WT	WT	WT	WT	WT	WT	WT	WT	WT
SEATING											
Deluxe Fishing Seats	-	-	-	4	3	2	2	-	-	2	2
Pro Fishing Seats	4	4	4	OPT	OPT	OPT	OPT	4	4	OPT	OPT
Optional Seating	BT/PP/RC	BT/PP/RC	BT/PP/RC	BT/PP/RC	BT/PP/RC	BT/PP/RC	BT/PP	BT/PP/RC	BT/PP/RC	PP/RC	PP/RC
Conversion Bow / Bow Platform Pad	STD/OPT	STD/OPT	STD/OPT	STD/OPT	STD/OPT	STD/OPT	STD/OPT	- / -	- / -	- / -	- / -
Conversion Bench / Jump Seats	-(OB) / STD (OB)*	OPT (OB) / OPT(OB)*	OPT (OB) / OPT(OB)*	OPT / STD	OPT / STD	OPT / STD	OPT / STD	- / OPT	- / OPT	- / OPT	- / OPT
STORAGE											
Bow Cargo Netting	OPT	OPT	OPT	OPT	OPT	OPT	OPT	OPT	OPT	OPT	OPT
Lockable Under Console Storage Drawers (Port / Starboard)	- / OPT	- / OPT	- / OPT	- / OPT	- / OPT	- / OPT	- / -	- / -	- / -	- / -	- / -
Storage Compartment(s)	STD (L)	STD (L)	STD (L)	STD (L)	STD (L)	STD (L)	STD (L)	STD (L)	STD (L)	STD (L)	STD (L)
Rod Storage Compartment(s)	STD (L)	STD (L)	STD (L)	STD (L)	STD (L)	STD (L)	-	STD (L)	STD (L)	STD (L)	STD (L)
Livewell	A R	A R	A R	A	A	A	A	A	A	A	A
Baitwell (Bow/Stern)	- / -	- / -	- / -	- / -	- / -	- / -	- / -	- / -	- / -	- / -	- / -
STEERING											
No Feedback Steering	-	STD (OB)	STD (OB)	-	STD	STD	STD	-	-	-	-
Hydraulic Steering (recommended with 150hp or more)	STD	OPT (STD SST)	OPT (STD SST)	STD	OPT	OPT	OPT	STD	STD	OPT	OPT
Tilt Steering/ Helm Seat Slider	STD / STD	STD / STD	STD / STD	STD / STD	OPT / STD	OPT / STD	OPT / OPT	STD / STD	STD / STD	OPT / OPT	OPT / OPT
ELECTRONICS											
Bilge Pump	STD	STD	STD	STD	STD	STD	STD	STD	STD	STD	STD
Battery Charger	OPT	OPT	OPT	OPT	OPT	OPT	OPT	OPT	OPT	OPT	OPT
Dual Stereo	OPT	OPT	OPT	OPT	OPT	OPT	OPT	OPT	OPT	OPT	OPT
Boss® Stereo	STD	STD	STD	STD	STD	STD	OPT	STD	STD	OPT	OPT
Depth Finder (Console / Bow)	OPT / OPT	OPT / OPT	OPT / OPT	OPT / OPT	OPT / OPT	OPT / OPT	OPT / OPT	OPT / OPT	OPT / OPT	OPT / OPT	OPT / OPT
ANCILLARY POWER											
Kicker Outboard	OPT	OPT	OPT	OPT	OPT	OPT	-	OPT	OPT	OPT	OPT
Bow Trolling Motor	OPT	OPT	OPT	OPT	OPT	OPT	OPT	OPT	OPT	OPT	OPT
INTERIOR											
Carpet	STD	STD	STD	STD	STD	STD	STD	-	-	-	-
Vinyl Floor (Cockpit & Decks)	OPT	OPT	OPT	OPT	OPT	OPT	OPT	STD	STD	STD	STD
Vinyl Floor (Cockpit Only)	OPT	OPT	OPT	OPT	OPT	OPT	OPT	-	-	-	-
Snap-in Carpet	OPT	OPT	OPT	OPT	OPT	OPT	OPT	OPT	OPT	-	-
CANVAS COVERS											
J-Hook Travel Cover	OPT	OPT	OPT	OPT	OPT	OPT	OPT	OPT	OPT	OPT	OPT
Sun Top with Boot	OPT	OPT	OPT	OPT	OPT	OPT	OPT	OPT	OPT	OPT	OPT
Bimini Top	OPT	OPT	OPT	OPT	OPT	OPT	OPT	-	-	-	-
Side Curtains	OPT	OPT	OPT	OPT	OPT	OPT	OPT	OPT	OPT	OPT	OPT
Aft Curtains	OPT	OPT	OPT	OPT	OPT	OPT	OPT	-	-	-	-
Drop Curtain	-	-	-	-	-	-	-	OPT	OPT	OPT	OPT
Tonneau Cover	OPT	OPT	OPT	OPT	OPT	OPT	OPT	OPT	OPT	OPT	OPT
MISCELLANEOUS											
Port Console	STD	STD	STD	STD	STD	STD	STD	STD	STD	STD	STD
Stainless Steel Retractable Cleats/Flip Up Cleats	STD / -	STD / -	STD / -	- / OPT	- / OPT	- / OPT	- / OPT	STD / -	STD / -	- / -	- / -
Washdown System	OPT	OPT	OPT	OPT	OPT	OPT	OPT	OPT	OPT	OPT	OPT
Swim Platform with Ladder / Reboarding Ladder	STD (SST) OPT (OB) / STD (OB)	STD (SST) OPT (OB) / STD (OB)	STD (SST) OPT (OB) / STD (OB)	OPT / STD	OPT / STD	OPT / STD	OPT / STD	STD/-	STD/-	- / STD	- / STD
Ski Pylon / TurboSwing® Tow	STD (SST) OPT (OB) / -	STD (SST) OPT (OB) / -	STD (SST) OPT (OB) / -	OPT / -	OPT / -	OPT / -	OPT / -	- / -	- / -	- / -	- / -
Bow Stainless Steel Rails	STD	STD	STD	-	-	-	-	STD	STD	OPT	OPT
SureMount Gunnel System	STD	STD	STD	STD	STD	STD	STD	STD	STD	STD	STD
*N/A for all SST											

LEGEND: STD = Standard OPT = Optional - = Not Available  
SEATING: BT = Butt Seat with Pedestal PP = Power Pedestal RC = Reclining Captains Chair Seat with Armrests and Slider  
CONSOLE: DC = Dual Console SC = Side Console TL = Tiller WT = Walk-Through Windshield  
STORAGE/LIVEWELL: L = Lockable A = Aerated R = Standard Recirculating System ® = Optional Recirculating System

RAPTOR			FISH HAWK				PRO TILLER			VISION			DISCOVERY		KODIAK
2100	1850	1750	1950	1850	1750	1650	1850	1750	1650	1700	1600	1600 T	1650	1450	1800
WT	WT/SC/DC	WT/SC/DC	WT/SC/DC	WT/SC/DC	WT/SC/DC	WT/SC/DC	TL	TL	TL	WT/SC/DC	WT/SC/DC	TL	SC/TL	SC/TL	SC/TL
-	-	-	2	2	2	2	2	2	2	2	2	2	2	2	2
2	2	2	OPT	OPT	OPT	OPT	OPT	OPT	OPT	-	-	-	-	-	-
BT/PP/RC	BT/PP/RC	BT/PP/RC	BT/PP	BT/PP	BT/PP	BT/PP	BT/PP	BT/PP	BT/PP	BT	BT	BT	BT	BT	BT
- / -	- / -	- / -	- / -	- / -	- / -	- / -	- / -	- / -	- / -	- / -	- / -	- / -	- / -	- / -	- / -
OPT / -	OPT / -	OPT / -	OPT / -	OPT / -	OPT / -	OPT / -	- / -	- / -	- / -	- / OPT	- / OPT	- / -	- / -	- / -	- / -
STD	STD	STD	OPT	OPT	OPT	OPT	OPT	OPT	OPT	OPT	OPT	OPT	OPT	OPT	OPT
- / STD	- / STD	- / STD	- / OPT	- / OPT	- / OPT	OPT / OPT	STD / -	STD / -	STD / -	- / -	- / -	- / -	- / -	- / -	- / -
STD (L)	STD (L)	STD (L)	STD (L)	STD (L)	STD (L)	STD	STD (L)	STD (L)	STD (L)	STD	STD	STD	STD	STD	STD
STD (L)	STD (L)	STD (L)	STD (L)	STD (L)	STD (L)	STD (L)	STD (L)	STD (L)	STD (L)	STD / OPT (L)	STD (L)	STD (L) / OPT (L)	STD (L)	STD (L)	STD (L)
A R	A R	A R	A ®	A ®	A ®	A	A ®	A ®	A	A	A	A	A	A	A
STD / STD	STD / STD	STD / STD	OPT / STD	OPT / -	OPT / -	OPT / -	OPT / STD	OPT / STD	OPT / STD	- / -	- / STD	- / STD	- / -	- / -	- / -
-	STD	STD	-	STD	STD	STD	-	-	-	STD	STD	-	STD (n/a TL)	STD (n/a TL)	STD (n/a TL)
STD	OPT	OPT	STD	OPT	OPT	OPT	OPT	OPT	OPT	-	-	-	-	-	-
STD / STD	STD / STD	STD / STD	STD / STD	OPT / STD	OPT / STD	OPT / OPT	- / -	- / -	- / -	- / -	- / -	- / -	- / OPT	- / OPT	- / OPT
STD	STD	STD	STD	STD	STD	STD	STD	STD	STD	STD	STD	STD	STD	STD	STD
OPT	OPT	OPT	OPT	OPT	OPT	OPT	OPT	OPT	OPT	OPT	OPT	OPT	OPT	OPT	OPT
OPT	OPT	OPT	OPT	OPT	OPT	OPT	-	-	-	-	-	-	-	-	-
STD	OPT	OPT	OPT	OPT	OPT	OPT	OPT	OPT	OPT	OPT	OPT	OPT	OPT	OPT	-
OPT / OPT	OPT / OPT	OPT / OPT	OPT / OPT	OPT / OPT	OPT / OPT	STD / OPT	OPT / OPT	OPT / OPT	OPT / OPT	OPT / OPT	OPT / OPT	OPT / OPT	OPT / OPT	OPT / OPT	OPT / OPT
OPT	OPT	OPT	OPT	OPT	OPT	-	OPT	OPT	-	-	-	-	-	-	-
OPT	OPT	OPT	OPT	OPT	OPT	STD	OPT	OPT	OPT	OPT	OPT	OPT	OPT	OPT	OPT
STD	STD	STD	STD	STD	STD	STD	STD	STD	STD	STD	STD	STD	STD	STD	STD
OPT	OPT	OPT	OPT	OPT	OPT	OPT	OPT	OPT	OPT	OPT	OPT	OPT	OPT	OPT	OPT
STD	OPT	OPT	OPT	OPT	OPT	OPT	-	-	-	-	-	-	-	-	-
OPT	OPT	OPT	OPT	OPT	OPT	OPT	OPT	OPT	OPT	-	-	-	-	-	-
OPT	OPT	OPT	OPT	OPT	OPT	OPT	OPT	OPT	OPT	OPT	OPT	OPT	OPT	OPT	OPT
OPT	OPT (WT)	OPT (WT)	OPT (WT)	OPT (WT)	OPT (WT)	OPT (WT)	-	-	-	-	-	-	-	-	-
-	OPT	OPT	OPT	OPT	OPT	OPT	-	-	-	OPT (WT)	OPT (WT)	OPT	-	-	-
OPT	OPT (WT)	OPT (WT)	OPT (WT)	OPT (WT)	OPT (WT)	OPT (WT)	-	-	-	OPT (WT)	OPT (WT)	-	-	-	-
OPT	OPT (WT)	OPT (WT)	OPT (WT)	OPT (WT)	OPT (WT)	OPT (WT)	-	-	-	-	-	-	-	-	-
-	-	-	-	-	-	-	-	-	-	OPT (WT)	OPT (WT)	-	-	-	-
OPT	OPT (WT)	OPT (WT)	OPT (WT)	OPT (WT)	OPT (WT)	OPT (WT)	-	-	-	OPT (WT)	OPT (WT)	-	-	-	-
STD	OPT	OPT	OPT	OPT	OPT	OPT	-	-	-	OPT	OPT	-	-	-	-
STD / -	STD / -	STD / -	- / OPT	- / OPT	- / OPT	- / OPT	- / OPT	- / OPT	- / OPT	- / -	- / -	- / -	- / -	- / -	- / -
OPT	OPT	OPT	OPT	OPT	OPT	OPT	OPT	OPT	OPT	-	-	-	-	-	-
- / STD	- / STD	- / STD	OPT / STD	OPT / STD	OPT / STD	OPT / STD	- / STD	- / STD	- / STD	OPT / STD	OPT / STD	- / STD	- / STD	- / STD	- / STD
- / OPT	- / OPT	- / OPT	- / OPT	- / OPT	- / OPT	- / OPT	- / -	- / -	- / -	OPT / -	OPT / -	- / -	- / -	- / -	- / -
-	-	-	-	-	-	-	-	-	-	-	-	-	-	-	-
STD	STD	STD	STD	STD	STD	STD	STD	STD	STD	STD	STD	STD	STD	STD	STD

These are just some of the features and options available. Please see the Crestliner website for more information. Some features/options may change based on layout. Every effort was made to ensure that this information was accurate at the time of printing. Crestliner assumes no responsibility for errors in type or in print.



## DEEP-V ADDITIONAL SPECIFICATIONS & COLORS

<b>SPECIFICATIONS</b>	<b>SPORTFISH 2150</b>		<b>SPORTFISH 1950</b>		<b>SPORTFISH 1850</b>		<b>SUPER HAWK 1950</b>		<b>SUPER HAWK 1850</b>		<b>SUPER HAWK 1750</b>		<b>SUPER HAWK 1650</b>		<b>AUTHORITY 2250</b>	
Max Cockpit Depth	30.5"	77 cm	26.5"	67 cm	26.25"	67 cm	26"	66 cm	25.25"	64 cm	25.5"	65 cm	23.5"	60 cm	30.5"	77 cm
Transom Height	25"	64 cm	25"	64 cm	25"	64 cm	25"	64 cm	25"	64 cm	25"	64 cm	25"	64 cm	25"	64 cm
Deadrise	17°	17°	17°	17°	17°	17°	18°	18°	17°	17°	17°	17°	12°	12°	17°	17°
Aluminum gauge bottom	.125"	.318 cm	.125"	.318 cm	.100"	.254 cm	.125"	.318 cm	.100"	.254 cm	.100"	.254 cm	.090"	.229 cm	.125"	.318 cm
	<b>AUTHORITY 2050</b>		<b>COMMANDER 2050, 1850</b>		<b>RAPTOR 2100</b>		<b>RAPTOR 1850, 1750</b>		<b>FISH HAWK 1950</b>		<b>FISH HAWK 1850</b>		<b>FISH HAWK 1750</b>		<b>FISH HAWK 1650</b>	
Max Cockpit Depth	26.5"	67 cm	30"	76 cm	23"	58 cm	24"	61 cm	22"	56 cm	22.5"	57 cm	22"	56 cm	24"	61 cm
Transom Height	25"	64 cm	25"	64 cm	25"	64 cm	25"	64 cm	25"	64 cm	25"	64 cm	25"	64 cm	20"	51 cm
Deadrise	17°	17°	17°	17°	17°	17°	17°	17°	17°	17°	12°	12°	12°	12°	12°	12°
Aluminum gauge bottom	0.125"	.318 cm	0.125"	.318 cm	0.125"	.318 cm	0.100"	.254 cm	0.100"	.254 cm	0.100"	.254 cm	0.100"	.254 cm	0.090"	.254 cm
	<b>PRO TILLER 1850</b>		<b>PRO TILLER 1750</b>		<b>PRO TILLER 1650</b>		<b>VISION 1700</b>		<b>VISION 1600, 1600 T</b>		<b>DISCOVERY 1650, 1450</b>		<b>KODIAK 1800</b>			
Max Cockpit Depth	22"	56 cm	22"	56 cm	22"	56 cm	24"	61 cm	24"	61 cm	21.5"	55 cm	21.5"	55 cm		
Transom Height	25"	64 cm	25"	64 cm	20"	51 cm	25"	64 cm	20"	51 cm	20"	51 cm	20"	51 cm		
Deadrise	12°	12°	12°	12°	12°	12°	12°	12°	10°	10°	6°	6°	10°	10°		
Aluminum gauge bottom	0.100"	.254 cm	0.100"	.254 cm	0.090"	.254 cm	.100"	.254 cm	.100"	.254 cm	.090"	.229 cm	0.100"	.254 cm		

### PAINT OPTIONS



Blue Flame Metallic



Silver Metallic



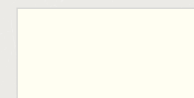
Red Flame Metallic



Canyon Brown Metallic



Black Metallic



Summit White



Olive Drab

### CARPET SWATCHES



Gray Carpet



Tan Carpet

### VINYL FLOORING



Gray Vinyl



Tan Vinyl

### VINYL SEATING



Gray Vinyl



Tan Vinyl

\*Not all processes, features and statements apply to every Crestliner boat model.

All prices and specifications subject to change. Crestliner reserves the right to discontinue models or change prices, specifications, materials, equipment, color or design at any time without notice and without incurring obligations. Some models are shown with optional features and equipment. Outboard model weights shown in this catalog reflect the approximate weight of the boat only, and do not include weights of the outboard motor or accessories installed. All boats meet or exceed United States Coast Guard regulations, applicable American Boat and Yacht Council standards and are certified by the National Marine Manufacturer's Association. Crestliner is so confident its products define durability that we offer one of the industry's best warranties to back them up. Crestliner was the first to offer a limited LIFETIME hull warranty to the original owner. All main seam welds are covered. Interior support construction carries a limited 10-year warranty. Plus, you get a limited 3-year bow-to-stern warranty on virtually everything else. It gets better...Crestliner's warranty is transferable! When its time to upgrade to a new Crestliner, you have the option to transfer the warranty to the second owner. Our proven welding techniques and innovations allow us to offer you one of the best warranties in the industry. (Limited Lifetime warranty differs for CRV and CR Jon boats.) Some restrictions apply. For complete details, a copy of our limited warranty is attached to each new boat or may be obtained from your Crestliner dealer. Many boats featured in this catalog are shown with available options. See your dealer for details. Every effort was made to ensure that this information was accurate at the time of printing. Crestliner assumes no responsibility for errors in type, in print or in photos. Please follow the rules of safe boating, be courteous to others and respect the marine environment. Special thanks to NMMA, Mercury, Onyx, Mantrap Lodge, Park Rapids, MN and Port Of Kimberling Marina & Resort, Kimberling City, MO.

©2016 Crestliner / A Brunswick boat company. Printed in USA